

MuseNews

October - December 2008

A quarterly publication of the Churchill County Museum Association

Attendance . . .

September . . .	924
October . . .	1,536
November . . .	905

Nevada: Carson City, Dayton, Elko, Eureka, Fallon, Fernley, Gabbs, Gardnerville, Goldfield, Hawthorne, Las Vegas, Lovelock, Minden, Overton, Pahrump, Reno, Round Mountain, Schurz, Silver Springs, Sparks, Sun Valley, Tonopah, Virginia City, Wadsworth, Yerington.

United States: Alaska, Arizona, California, Colorado, Connecticut, Florida, Georgia, Hawaii, Idaho, Illinois, Iowa, Kansas, Kentucky, Louisiana, Maine, Maryland, Massachusetts, Michigan, Minnesota, Missouri, Montana, New Jersey, New Mexico, New York, North Carolina, North Dakota, Ohio, Oklahoma, Oregon, Pennsylvania, South Dakota, Texas, Utah, Virginia, Washington, West Virginia, Wisconsin.

Foreign Countries: Czech Republic, Denmark, England, France, Germany, Greece, Ireland, Italy, Kenya, Mexico, Netherlands, New Zealand, Vancouver Island, Western Australia

Comments . . .

This is beautiful. Did you build this place? -- 2 year old

Congratulations on a superb museum! Want to buy Hearts of Gold cantaloupe seeds to plant in my garden at home. -- N. Carolina Friendly place. -- Texas

Thank for helping me validating my [Highway 50] guide. -- Italy

Thank you. God bless America! -- Italy

Thank you for a trip down memory lane. Last time in Fallon was 1970. -- Pahrump

It was great seeing our Gramma's [Wuzzie George] work. We miss her dearly. -- Nevada

Museum Association Continues with Capital Improvements

Most recently, new public restrooms have been completed near the front of the museum, located near the Museum Store in our new addition. Over the years museum staff members have become adept at guiding visitors to the back of the museum to our restrooms. Even though the old restrooms were remodeled in the mid-1990s, their location didn't change and most visitors were mystified as to where they were hiding! Why were the museum's original restrooms in the back of the building? Many community residents will recall that the museum was built in 1957 as a Safeway grocery store. As a rule, grocery stores don't use precious floor space at the front of their buildings for restrooms!

Thanks to Stillwater Enterprises for tiling the rooms, Fallon Glass for installing the mirrors, and the County's Facilities and Grounds crew for assisting the Churchill County Museum Association (CCMA) with this project. Funding for its completion came from the board's Building Fund, money donated to the museum over the years by local residents.

Perhaps the largest capital improvement project left on our "to do" list is scheduled to take place this winter. A few months ago, the CCMA Board of Trustees received a large donation from the Freeman and Norma Morgan Trust. The couple had earmarked funds for the museum with the stipulation that they be spent on capital improvement projects. The Board chose the updating of the ceiling of the museum's main room as their first project using these funds.

The ceiling needs an upgrade for a variety of reasons. A good cleaning is in order which will include the proper removal of the asbestos "popcorn" that covers it. In addition, the old lighting fixtures will be removed. The ceiling will be painted a dark color and new, energy-efficient lighting will be installed. The change in the look of the room will be dramatic and the artifacts being displayed in it will be better protected with proper lighting. The only drawback to this project will be the fact that the main room of the museum will need to be closed for about one month in order to complete the make-over. Other parts of the museum will remain open to visitors during this time, although there will be some changes to our normal hours of operation. This temporary inconvenience far outweighs the benefits we will receive when this project is complete!

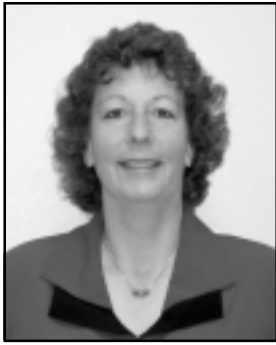
The CCMA Board of Trustees thanks the Churchill County Board of County Commissioners for funding a portion of the main room remodeling project.



Winter Hours Begin

Monday - Saturday from 10-4 * Sunday from 12-4
December through February





From the Director:

As I write this, another year is coming to a close, a time to reflect on our past accomplishments and to look forward to the new year.

One of our 2008 accomplishments was a redesign of the museum's website, which was launched in November. See our new look at ccmuseum.org and let us know what you think. Thanks to Liz Orozco of Pixelbrain Design who designed the layout of our site. We're very

pleased with the result!

Museum staff members were saddened by the passing of long-time supporter Mary Reid on November 16. Mary had donated memorial money for her late husband Herb Haber in the mid-90s which was used to fund the large light-up map in our Newlands Project exhibit.

Once that exhibit was completed, we could count on Mary, in her capacity as water expert with the Nevada Cooperative Extension Office, to bring in people involved with water issues and to use our exhibit to share with them the history of the Newlands Project. She was a longtime supporter of the museum and for that we are grateful.

We say "goodbye" in a very different way to outgoing County Commissioner Lynn Pearce who leaves office in January. Lynn has been our commissioner representative on the CCMA Board of Trustees for the past 12 years. Board members have always appreciated his support and the knowledge he brought to our meetings. He will be missed, but we know that we can always tune in to KVLV radio to hear his dulcet voice every day! Thanks, Lynn, for your dedication to the CCMA Board.

As Commissioner Pearce leaves office, we welcome new County Commissioner Carl Erquiaga to the CCMA Board. I met with Carl briefly a few weeks ago and he said he was looking forward to learning more about the museum and in serving on the board. Welcome Carl!

Finally, as the year ends, I can't close this column without congratulating the City of Fallon on its 100th anniversary. I was pleased to serve as one of the members of the Fallon Centennial Commission during 2008 and to participate in the many centennial events that occurred this year. As expected, copies of historic photographs from the museum's collections were whizzing through cyber space all year long, landing at the design firm in Reno for numerous projects, and at local newspaper offices and businesses. Museum staff members were pleased to assist with all aspects of this yearlong historic project.

While CCMA members received their copies of *In Focus -- Volume 21* this summer, 5,000 utility customers within Fallon's city limits received a free copy of the book in December as a gift from the City. Thanks to the Mayor and City Councilmen for funding the printing of *In Focus* this year and for sharing the history of the city to its many residents. Happy Birthday, Fallon. May you celebrate many more!

Until next time —

Jane

Thank You . . .

We have new "thank you's" for this newsletter, some can be found here and others are scattered throughout these pages! Many of our friends have donated one kind of service or another on projects that wouldn't have been completed without their assistance. A great big "thank you" to:

CC Communications employees **Aaron, Nick, and Larry** for moving a large tufa rock into position in our Deseree Walker Memorial Children's Garden.

Gary Rothery and Mike Nolan for assisting Exhibits Assistant Tom Bartel in rearranging large items around the Woodliff Building.

Volunteer **Jack Scheuermann** for continuing to clean and repair artifacts brought into the collection. We appreciate Jack's willingness to clean and restore objects that involve detailed and painstaking cleaning methods, something our museum staff members never seem to find time to do!

Waylon Helseth for blocking up the old door opening on the south side of the museum building. Way back in the late 1980s, when Sierra Pacific Power had just acquired the former Dodge Brothers Construction Office, the old safe found in that building was removed during the course of remodeling. The door to that safe came to the museum and was installed in the Warren Williams library exhibit.

The safe door entered the building through an old doorway used by the Safeway Store and the outside of this opening was covered with a piece of plywood. That plywood remained in place until this October. CCMA Trustees agreed that it was unattractive and served as a place for wasps and black widow spiders to live.

Waylon, a tile setter by trade, agreed to block up the unsightly hole and to re-stucco it to match the rest of the building. The completed project is a great improvement over the old look!

(See related photographs on page 5.)

Fashions Through the Decades on Display . . .

A recent addition to our exhibits in the museum's main room is one that focuses on fashions through the decades. From a beautifully preserved green silk dress from the 1870s, through a summer "lawn" dress from 1910, two flapper dresses from roaring 1920s, to dresses from the late 1930s and 40s, this exhibit showcases some of our newest acquisitions.

In fact, over the last few months, many articles of clothing have been donated to the museum from many different decades. In fact, so many pieces of clothing are in our collection that museum staff members have decided, for the time being, to keep this display space expressly for the displaying of clothing, rotating items through every few months.

Women's styles have changed so much through the years that it is always of interest to our visitors to view items from the past. Of course, many of us may remember wearing some of these items, so viewing them can be a trip down memory lane!

Our next fashion exhibit will feature some fantastic luxury pieces in basic black and white.



New Early Ranching Families Exhibit Under Construction . . .

Another exhibit is under construction in the museum's main room, one featuring stories of some of the early ranching families that settled in Churchill County before the Newlands Project was ever imagined.

These early settlers had to find ranch land that was close to a water source in order to provide feed for their livestock. Most ranchers at this time harvested the natural grass hay that grew in these wetter lands throughout the county.

While the exhibit features a number of early family names, it could never contain the names of every family that settled here. Enter Museum Assistant and certified genealogist Barbara Hodges. Barbara researched the 1910 Federal Census for names of Fallon residents, an article we published in the most recent *In Focus* issue. It was so interesting to see where these folks came from before settling in the nascent town of Fallon.

Now Barbara will be back at work, ferreting out the names and home places of the families living in Churchill County in 1910. This information will be included in our next issue of *In Focus* (Volume 22) and in this new exhibit. We hope that visitors who don't see their family listed on the labels on the back wall will enjoy finding them in the pages of the census. Thanks, Barbara, for your assistance with this project!

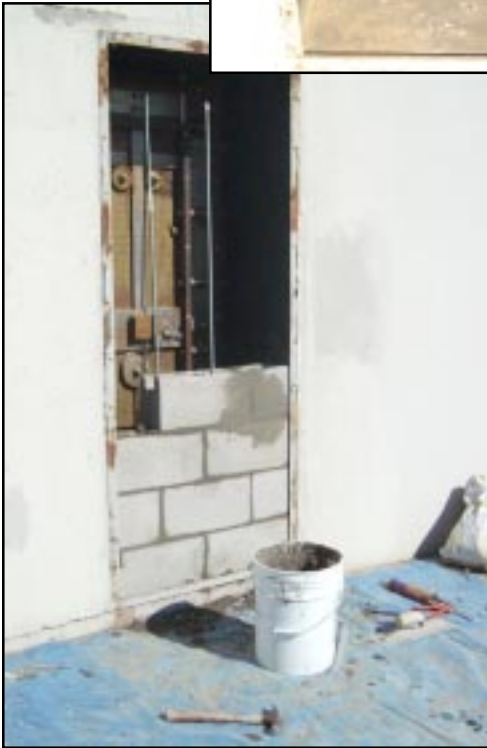


Above: Pioneer families from different Churchill County Districts are featured in the exhibit.

Right: One of Marie Hill's fancy black dresses from the 1870s can be seen in the display. Marie's husband was a business partner of Mr. Grimes, who Grimes Point is named after.

Photos of Wall Repair on Museum's South Side . . .

A peek behind the rotting plywood revealed the back of the Dodge Brothers safe door. The front of the door can be seen in the Warren Williams library exhibit inside the msueum.



Blocking up of the wall in progress.

Finished repair before painting.



American Association of University Women Present Public Lecture on February 11 . . .

On Wednesday, February 11, beginning at 6:30 pm at the museum, Kristen Reimer will be presenting a talk on her experiences teaching English in the People's Republic of China. Kristen graduated from college in the United States and went to China for a two year stint in that country, absorbing their culture and traditions along the way.

This meeting night is the monthly meeting of the AAUW, but the public is invited to attend. The program is free and refreshments will be served.

***In Focus* Volume 22 Needs You! . .**

Well, maybe we don't need you, but we need your stories! While last year's *In Focus* dealt solely with Fallon in celebration of the city's centennial, this year the publication will go back to its usual format of showcasing stories about Fallon and Churchill County.

Some of the stories in the works are Fallon and Churchill County law enforcement -- solved and unsolved mysteries over the years -- a short history of centennial ranches in Churchill County, and Pioneer Portraits of Lida Sander, the Beeghley and Ernst families, and possibly more details about the life of Robert L. Douglass.

Often people ask *In Focus* editors when they will feature a pioneer portrait of their family members. Frankly, we can only publish such family portraits if someone writes them for us or gives us information with which to craft an article. Then we're happy to publish the story!

If you have an idea for an article that should appear in our next *In Focus*, contact Jane or Bunny at the museum to discuss your idea. We'll be happy to assist you.

Memorials . . .

The Churchill County Museum has received memorials in the memory of the following people during this past quarter:

Dean Griffith Barrenchea, Anita Ione Cislini Erb, George Frey, John Serpa Gomes, Patrick John "Duke" Gonzales Jr., Samuel Ray Guazzini, Karen Harrison, Ludie Mae Hill, Arthur W. Johnson, Roy C. Johnson Sr., Juichi [1976] and Su [1973] Kito, William "Bill" Lawry Sr., Alice "Allie" Langston Mahoney, Helen Marie Reeves McGinness, Margaret Joan McLaughlin, Merton Mickelson, Vivian Osgood, Mildred B. "Milly" Pomeroy, Mary Elizabeth Reid, Peggy Segura, Dennis O. Sorensen, Annie Isabel Soares Titell, Richard Victor, Kathryn Lea "Kathi" Wilson, Marie Porteous York.